

Byley Aerodrome

LEFT: Aerial photograph of Byley Airfield 1945.
Photo: English Heritage National Monument Record.

RIGHT: Images taken of the Vickers Armstrong hangars and work areas, as seen today.

The large hangars where the Wellington Bombers were made still exist as well as the pill boxes and offices.

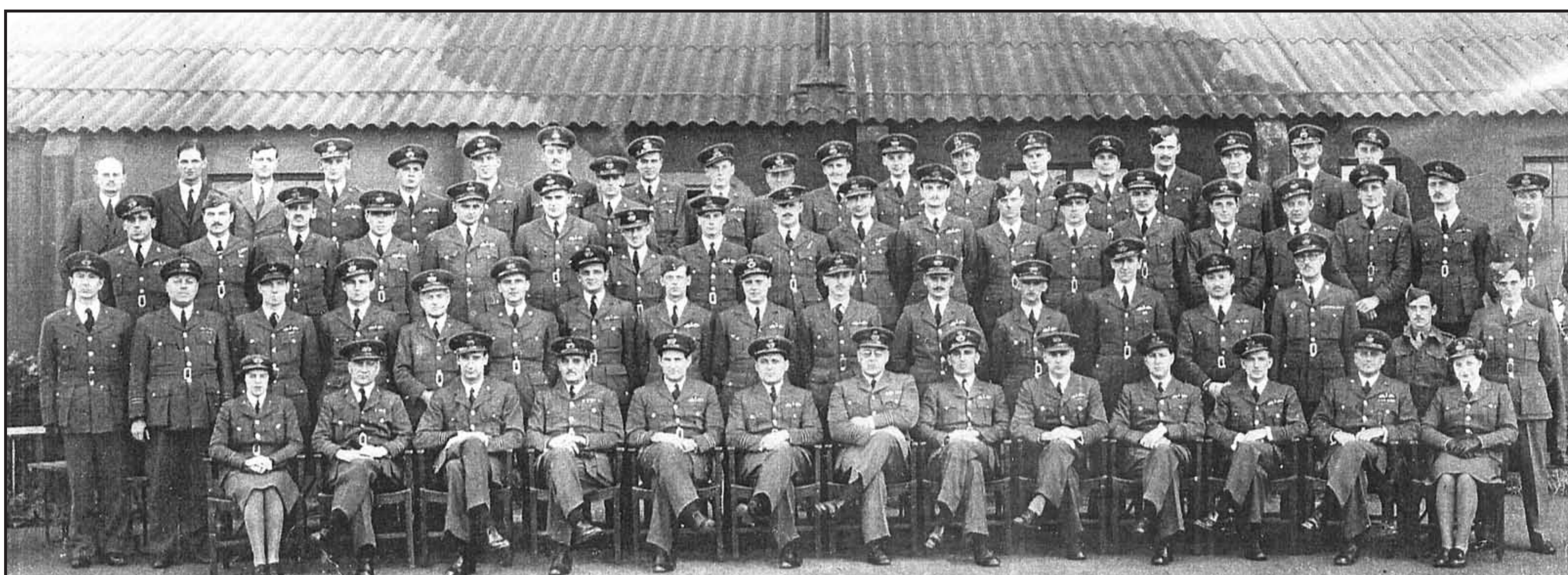
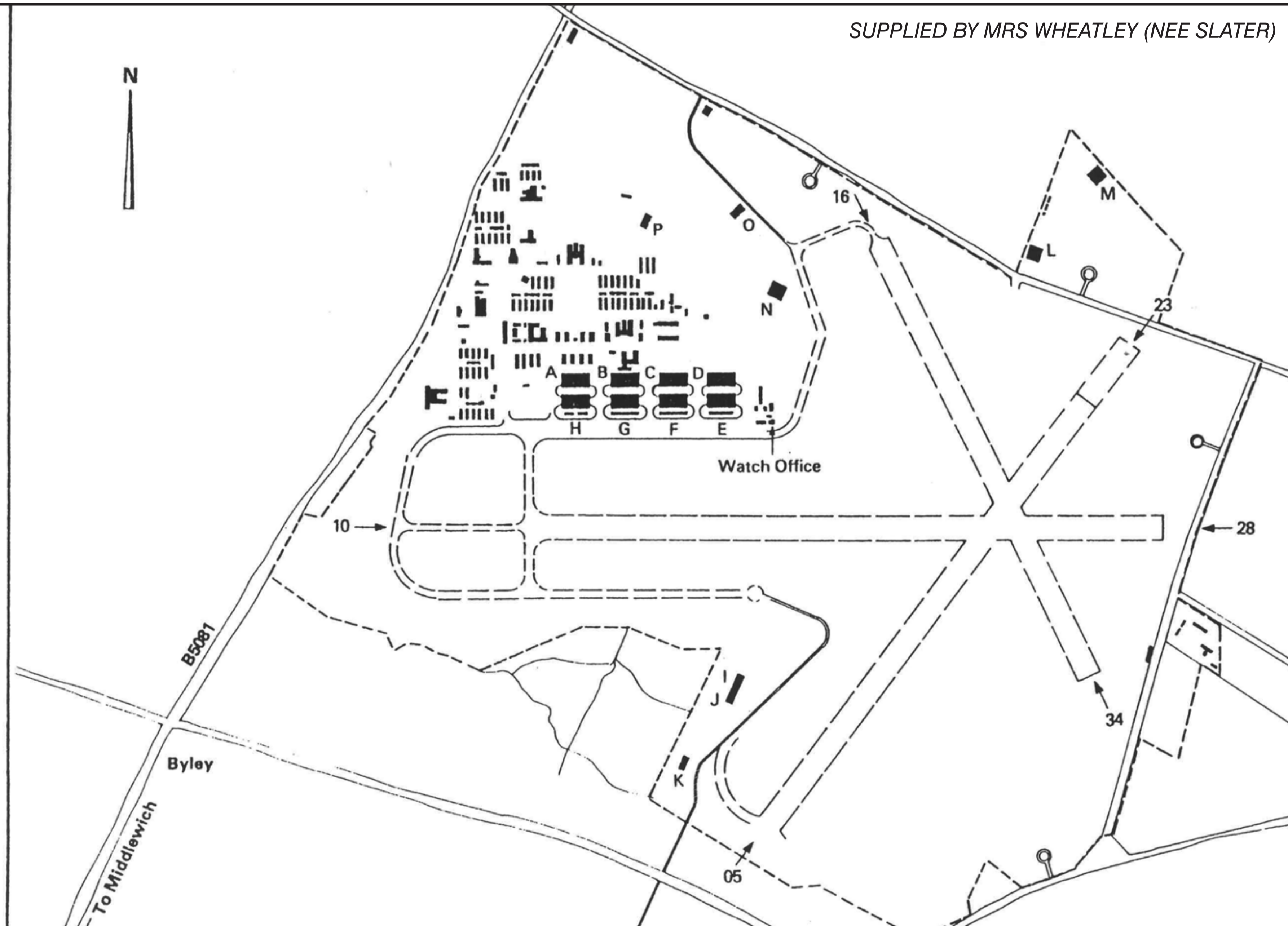
BELOW: Not much remains of the airfield today, just flat grassed areas with a defence post still remaining. The map below shows the layout of the Byley airfield in 1945.



Cranage Cheshire
 As at February 1945
 53° 13' N 02° 24' W
 Numbered 87 on area map

Runways:
 10/28 3,860 ft
 05/23 3,240 ft
 16/34 3,000 ft
 All Sommerfeld tracking on grass

Hangars:
 A-H Bellmans
 I, J, K, O & P Single Blisters
 L, M & N Double Blisters



ABOVE: Officers Flying School PHOTO SUPPLIED BY MRS WHEATLEY (NEE SLATER)

SPECIAL THANK YOU TO GERALD COATES, OF FIRMIN COATES, FOR THE GUIDED TOUR AND PERMISSION TO TAKE PHOTOGRAPHS.