

Middlewich and the Great War Project



Middlewich Heritage Trust

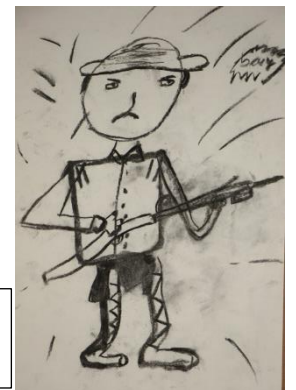
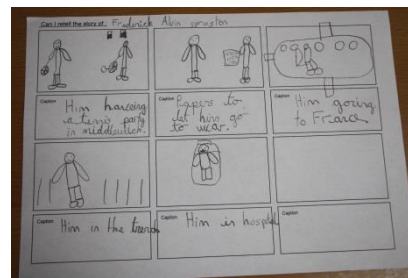
School workshops, class sessions and artworks



Poppy work shop for Wimboldsley primary School, recreating the London poppies for the remembrance garden with artist Neil Glendinning



Artist Sonali working with Cledford Primary school children, each class produced their own designed tiles based on what they had learnt from the class sessions. A selection of which made up the colourful tile artwork for the remembrance garden



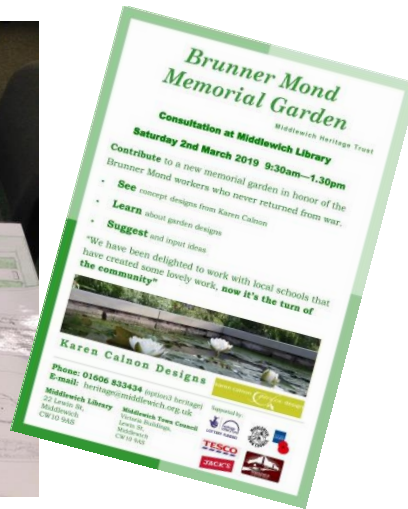
Creating storyboards, letters, designing medals as part of the class sessions run by the volunteers, doing a show and tell of local people during the war and what happened to them. The children went on to produce their own remembrance assemblies for their families



Middlewich branch of the Royal British Legion working with volunteers and school children to talk about what Remembrance means to their local communities. Cledford School invited us all to their special play they created using our information and their own research

Middlewich Heritage Trust

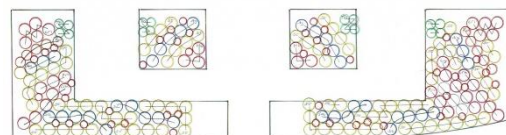
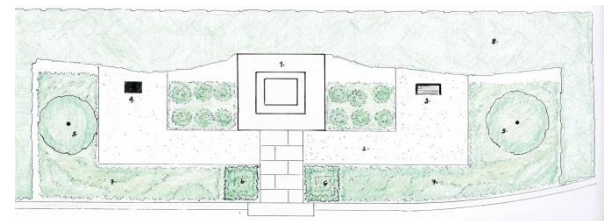
Designing and planting the memorial garden



A consultation workshop was held at Middlewich Library testing out the initial ideas for the memorial garden brief with the general public. This resulted in drawing up a planting scheme and final design.

The remembrance garden had been left with stone gravel for the last 20 years and had not been cleaned or maintained.

The final plan would keep pathways in the garden but introduce low maintenance planting. A seating area and spaces for the school artworks were created. The memorial itself was cleaned and repaired as part of a separate project.



| Code | Plant Name | Quantity |
|-------|----------------------------------|----------|
| A1 | Agapanthus al. | 10 |
| B1 | Beta vulgaris 20cm Row | 40 |
| B2 | Boydy | 40 |
| C1 | Chrysanthemum yellow | 10 |
| D1 | Coreopsis leafcut | 20 |
| E1 | Coreopsis leafcut | 20 |
| G1 | Green Yucca Dwarf | 20 |
| H1 | Hosta Pink Edge | 2 |
| L1 | Larix chamaecypar | 2 |
| M1 | Marrubium vulgare | 2 |
| N1 | Salix verticillata | 2 |
| O1 | Salix verticillata | 2 |
| P1 | Salix verticillata | 2 |
| Q1 | Salix verticillata | 2 |
| R1 | Salix verticillata | 2 |
| S1 | Salix verticillata | 2 |
| T1 | Salix verticillata | 2 |
| U1 | Salix verticillata | 2 |
| V1 | Salix verticillata | 2 |
| W1 | Salix verticillata | 2 |
| X1 | Salix verticillata | 2 |
| Y1 | Salix verticillata | 2 |
| Z1 | Salix verticillata | 2 |
| Total | Plants & substrate (excl. labor) | 2 |

karen calnon *calnon* design

Planting Plan Brunner Mond War Memorial Garden
Client: Middlewich Heritage Trust
Site: Middlewich Heritage Trust
Date: March 2019
Scale: 1:50
Drawn: Leah Bray
Reviewed: Karen Calnon

Karen Calnon, Brunner Mond War Memorial Garden, Middlewich, Cheshire
2019. All rights reserved. No part of this publication may be reproduced without the prior written permission of the author.



THE BRUNNER MOND MIDDLEWICH WAR MEMORIAL



The aftermath of the First World War

saw the biggest single wave of public commemoration ever with tens of thousands of memorials erected across England, both as a result of the huge impact the loss of three quarters of a million British lives had on communities and the official policy of not repatriating the dead, which meant that the memorials provided the main focus of this great loss.

To preserve the memory of those employees who had given their lives for their country, the directors of Brunner, Mond & Co. commissioned Darcy Braddell to design memorials for each of their works and offices. A photo taken in 1921 shows the Middlewich memorial at the time of the unveiling, which was led by Roscoe Brunner, son of John Brunner, one of the company's founders.



Middlewich Works Staff pictured outside the clubhouse in 1913. W.H. Swan who is on the memorial is pictured middle row, fifth from the left.



During the First World War the Joint War Committee administered over 3000 auxiliary convalescent hospitals in Britain staffed by local Voluntary Aid Detachments. This photo courtesy of Carrie Bird, may be a member of the Harrison family from Rosemount, Middlewich.

Brunner Mond was founded in 1873. They made soda ash by the (Solvay) ammonia-soda process, which they introduced to this country. During the First World War the firm manufactured half of the high explosives used by Britain on every front. 2,688 of their employees served in the war, and 291 died.

Thomas Arthur Darcy Braddell (1884-1970)

was awarded to Sir Ernest George. He had an extensive Arts and Crafts domestic practice in partnership with Humphry Deane, as Deane & Braddell. He designed the Mond family mausoleum, as well as the War Memorials at Brunner Mond's works and the war memorial at Blacko, Pendle, Lancashire.



Aerial view of Brunner Mond works on Brooks Lane, next to Murgatroyd's Salt Works. No date.

THE BRUNNER MOND CLUBHOUSE

Beside this Memorial there is a red brick building dated 1909. This used to be the Brunner Mond's Clubhouse opposite the works.

As the local papers began to report lists of casualties of the battles in Belgium, Messrs Brunner Mond offered their new clubhouse in Brooks Lane for the Red Cross Society to use as a hospital. The billiard room was reorganised to hold 10 to 12 beds (at first) and ancillary rooms were used as store or treatment rooms. Just before Christmas 1914 the first 12 wounded men arrived at the Hospital from all parts of the country.

The local people responded to requests for help and arrived at the hospital with food, clothing, blankets and bandages. The men were cared for by 20 Red Cross nurses working on a rota system under the direction of Dr. Melville.

The Brooks Lane Hospital was closed at the end of the Great War on 21st January, 1919 and on that day the Duchess of Westminster visited to give a personal "thank you" to Mrs Kay, the nursing staff and the band of workers who had spearheaded the fund-raising and donations. A total of 682 men had been nursed back to health at both Brooks Lane and Ravenscroft Hall hospitals. Mrs Kay was awarded the OBE for her leadership with the Red Cross.

For more information on the Remembrance Garden and the Great War Project, plus a downloadable trail guide, go to: www.middlewich-heritage.org.uk

Interpretation was included in this project, as well as the trail guide. An information board was designed and placed into the garden telling the story of the memorial and the area surrounding it. Included was a QR code which when scanned takes the visitor directly to our great war website, our trail guide and film. For the remembrance days and events we created five banners and posters to be displayed, each with photos of local families photographs donated to the project. A long term exhibition is in the Middlewich Library with copies of our trail guides.

MIDDLEWICH and The Great War Centenary



LOTTERY FUNDED



PLEASE DO NOT PUT THINGS ON TOP OF THIS DISPLAY CASE

MIDDLEWICH and The Great War Centenary



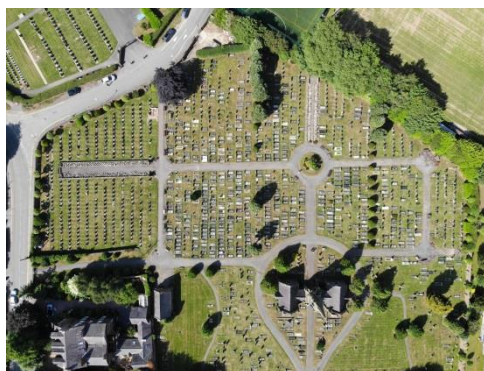
LOTTERY FUNDED



Middlewich and the Great War Project

Middlewich Heritage Trust

The Great War Trail



Tour included the cemetery where we have some graves from the Great War. A volunteer took some aerial photos to help with locations online

Photos around town were used to compile a guided tour of Middlewich in the Great War. Using research and family stories etc. the tour takes you to the significant areas of the town with a story to tell. A pilot guided tour with 14 volunteers, refined the tour and led to the trail guide and the full self-guided tour online.



Middlewich and the Great War Project

Middlewich Heritage Trust



The Roll of Honour and Remembrance



Publicity for our remembrance and the addition of 14 names onto our town memorial as discovered by Geoff Page and Philip Andrews. This year saw the biggest crowd for a remembrance service and participation from our local schools, including a poetry reading from a High School pupil.

The Roll of Honour was re-published with the correct names of local people and added people missed off the original. These were given out to all who attended



Remembrance Day
 We stood as one at the cenotaph
 (Beneath the weeping willow tree)
 We bowed our heads in reverence
 Recalling those who kept us free



Crisp uniforms, the standards high
 Prayers, praises, red poppies too
 Gathered as one, we are the many
 Owing so much to the valiant few

From the tower a church bell tolls
 The 11th hour, the 11th of November
 A crisp autumn morning falls silent
 As we bow our heads to remember

Yet, in the silence a sound is heard
 A babe in arms had begun to cry
 This a future, they sought to secure
 The reason, they'd fight for and die

Remembrance Day

A war to end all wars, that was what they said, alas the wars continue.

remembrance day

we stand at the cenotaph in silence
 the eleventh hour, eleventh day, eleventh month
 the bugler sounds the 'last post' to signal the start of the two minutes silence in memory of the fallen in many wars, comrades recalled, family and friends are remembered in the silence that abounds on a cold November morning.
 the young and the old stand as one with the liveryed in a show of thanks and respect for fallen heroes.
 with the sound of the 'revellie' the silence is broken and standards raised in preparation of the wreath laying, slowly and with reverence the wreaths of poppies are laid at the base of the cenotaph by the dignified and humble.
 the parade is called to order for the march away and to the sound of drums and bagpipes they marched away, as so many have, never to return.

L
E
S
T
W
E
R
E
F
O
R
G
E
T



We will remember them...

Middlewich and the Great War Project

Middlewich Heritage Trust

The Opening Ceremony



Middlewich Community Mayor David Roberts opening speech, followed by Lord Grey of Codnor and the Chair of Middlewich WI North West



Remembrance service for the fallen and unveiling of the newly repaired monument



Planting of the tree and official opening of the garden, unveiling of the bench by the chair of Middlewich Roundtable